

MERCEDES-BENZ

# SPRINTER



# UPFIT GUIDE





# HELPING MOBILE TECHNICIANS WORK MORE EFFECTIVELY BY PROVIDING ORGANIZED STORAGE SOLUTIONS

## AT RANGER DESIGN, WE BELIEVE MORE IS POSSIBLE.

We believe work vehicles and the technicians that drive them can become more organized, more efficient, more productive and more profitable. At Ranger Design we're committed to bringing you the products and services that make that possible.

More means helping you choose the right work van for your application, as well as giving you engineering support and expert advice to help design the most efficient work space in your new vehicle.

More also means getting that new van outfitted and on the road faster, so you can start using it for the reason you bought it.

We're committed to bringing you more, because we believe more is possible.





**CONTRACTOR**  
P. 6 – 7



**SERVICE**  
P. 8 – 9



**ELECTRICAL**  
P. 10 – 11



**HVAC**  
P. 12 – 13



**DELIVERY**  
P. 14 – 15



**ALUMINUM**  
P. 16 – 18



**FLOOR**  
P. 19



**ACCESSORIES**  
P. 20 – 21



**LADDER RACKS**  
P. 22

## Over 350 Distributors Across the Continent

---

**Buy** Ranger Design Quickship service is available through your local distributor. [rangerdesign.com/find-dealer](http://rangerdesign.com/find-dealer)

---

**Lead Time** Quickship orders placed with Ranger Design before 1PM EST, will ship from our factory in the next business day.

---



All products shown in this upfit guide are available on Quickship



# HOW TO USE THE LAYOUT GUIDE

## INSIDE ROOF HEIGHT

To determine the maximum shelf height that can be used in the van.

## PARTITION DEPTH

This indicates the space taken up by our partition for this vehicle. Please note that this measurement is determined by the partition that encroaches the most. Some partitions may take up less space. Take note that this measurement may not necessarily be on the floor.

## DOOR OPENING

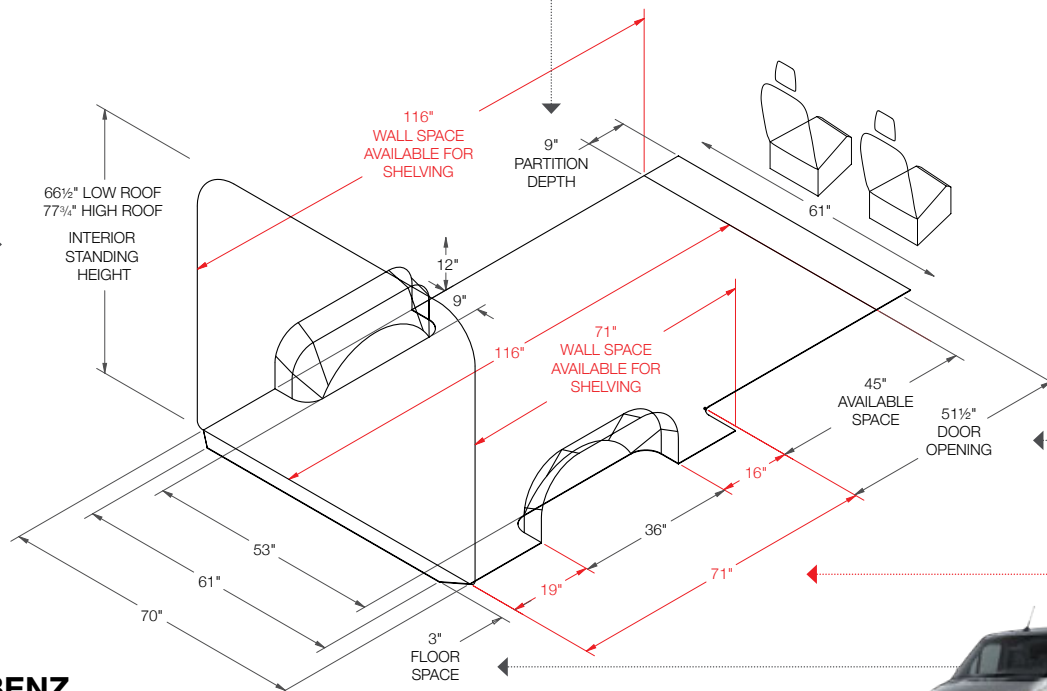
To determine where shelving will land in relation to the door opening. Use this measurement to determine the space available for drawer units.

## DIMENSIONS IN RED

These dimensions indicate unique measurements for each wheelbase. Use red dimensions to determine the exact wheelbase of your van.

## FLOOR SPACE

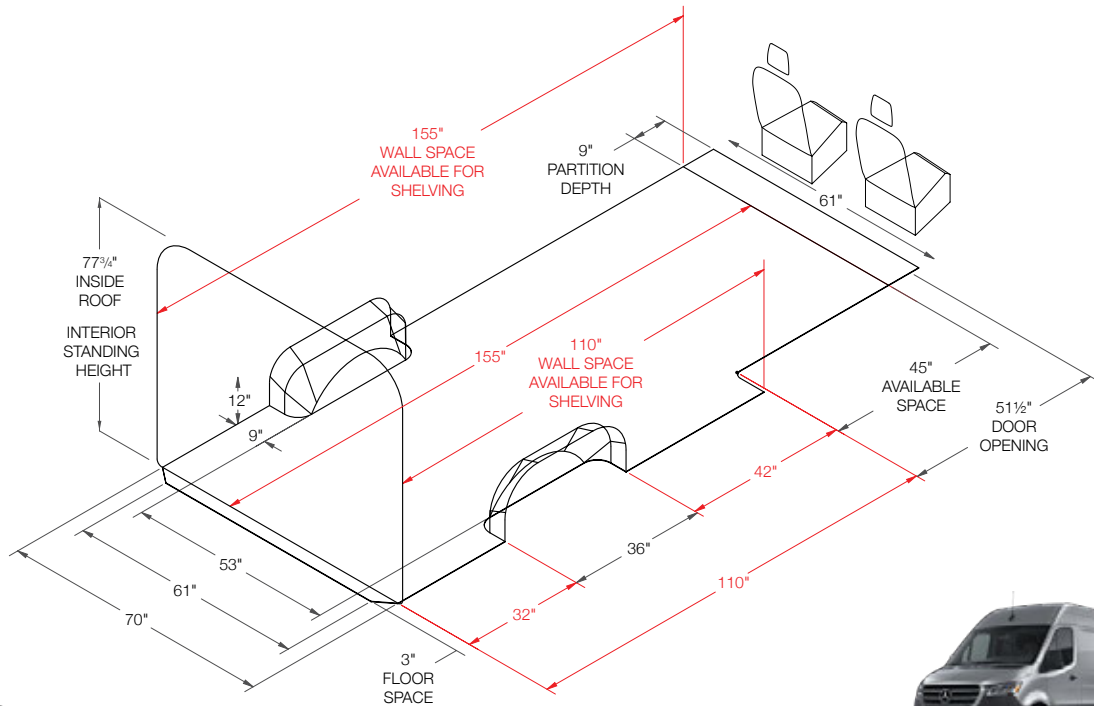
This area is usable floor space but due to curvature of the van there may not be the same available area at the roof. Please measure actual van for specific measurement at roof.



## MERCEDES-BENZ SPRINTER

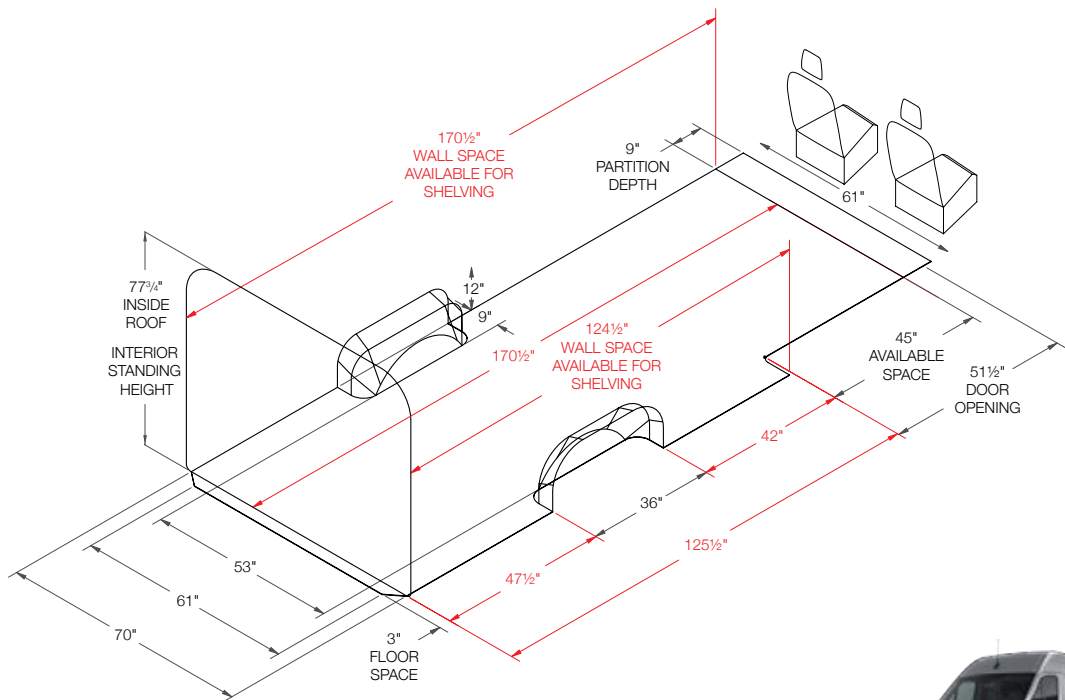
Regular 144" Wheelbase





## MERCEDES-BENZ SPRINTER

Long 170" Wheelbase



## MERCEDES-BENZ SPRINTER

170" Extended Wheelbase



## DHS-10

144" WHEELBASE

> High Roof



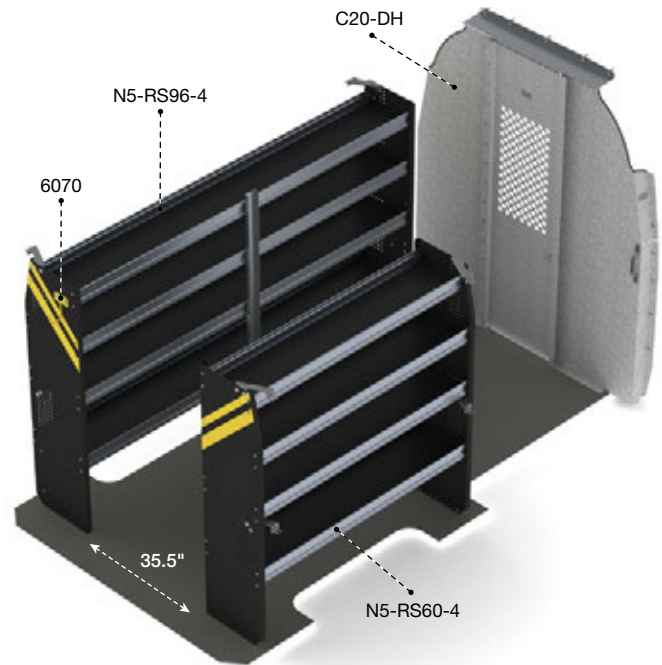
Qty	Part #	Description
1	6070	6" Hook, 3" opening, painted
1	C20-DH	Straight partition with perforated window, no access
1	N5-RS60-4	Steel shelving unit for high roof van, 14" D x 60" W x 62" H
1	N5-RS96-4	Steel shelving unit for high roof van, 14" D x 96" W x 62" H



C20-DL

**DLS-10 Package\*** is identical to DHS-10 Package with the exception of the partition which changes to C20-DL.

\*For Low Roof 144" wheelbase

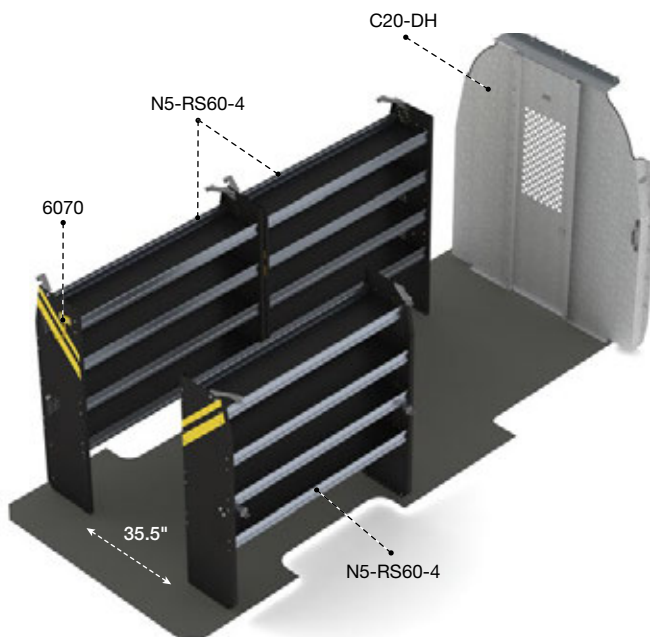


## DHL-10

170" OR 170" EXTENDED WHEELBASE

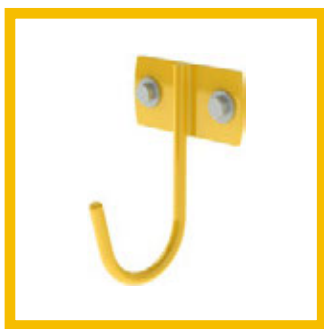
> High Roof

Qty	Part #	Description
1	6070	6" Hook, 3" opening, painted
1	C20-DH	Straight partition with perforated window, no access
3	N5-RS60-4	Steel shelving unit for high roof van, 14" D x 60" W x 62" H





## DHS-10



**6070**

6" Hook,  
3" opening,  
painted



DHS-16

144" WHEELBASE

> High Roof

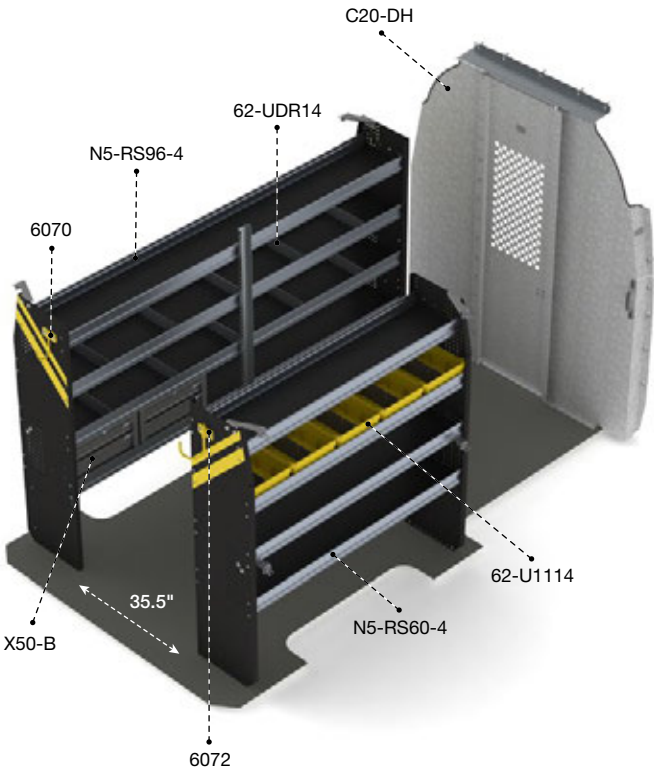


Qty	Part #	Description
1	6070	6" Hook, 3" opening, painted
1	6072	8" Swivel hook, 4" opening, painted
5	62-U1114	14" Deep plastic bin
2	62-UDR14	Set of 5 dividers for a 14" shelf
1	C20-DH	Straight partition with perforated window, no access
1	N5-RS60-4	Steel shelving unit for high roof van, 14" D x 60" W x 62" H
1	N5-RS96-4	Steel shelving unit for high roof van, 14" D x 96" W x 62" H
2	X50-B	Compact 2-drawer unit



DLS-16 Package\* is identical to DHS-16 Package with the exception of the partition which changes to C20-DL.

\*For Low Roof 144" wheelbase

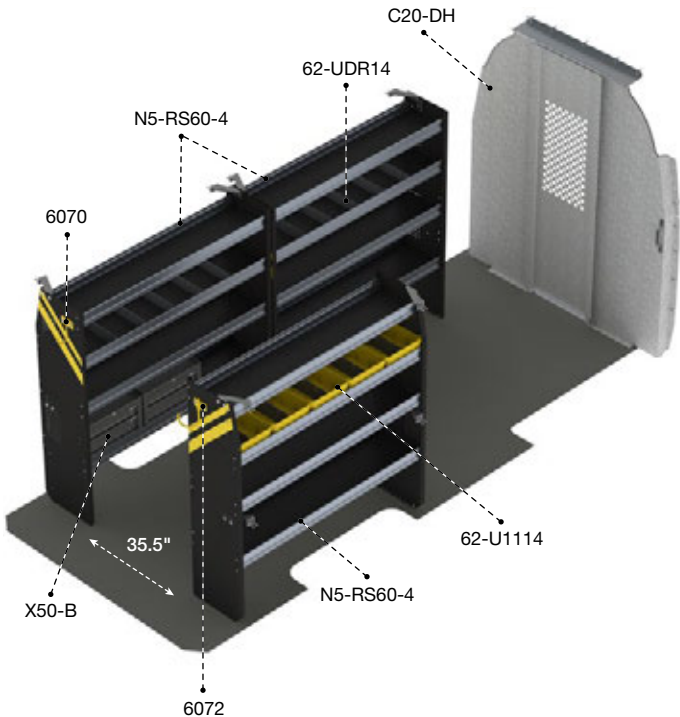


DHL-16

170" OR 170" EXTENDED WHEELBASE

> High Roof

Qty	Part #	Description
1	6070	6" Hook, 3" opening, painted
1	6072	8" Swivel hook, 4" opening, painted
5	62-U1114	14" Deep plastic bin
2	62-UDR14	Set of 5 dividers for a 14" shelf
1	C20-DH	Straight partition with perforated window, no access
3	N5-RS60-4	Steel shelving unit for high roof van, 14" D x 60" W x 62" H
2	X50-B	Compact 2-drawer unit







## DHS-16



**6072**

8" Swivel hook,  
4" opening, painted



**X50-B**

2 Drawer cabinet



**62-U1114**

14" Deep plastic bin  
with a center divider

**FOR MORE ACCESSORIES, SEE PAGE 20.**

DHS-11  
144" WHEELBASE

> High Roof

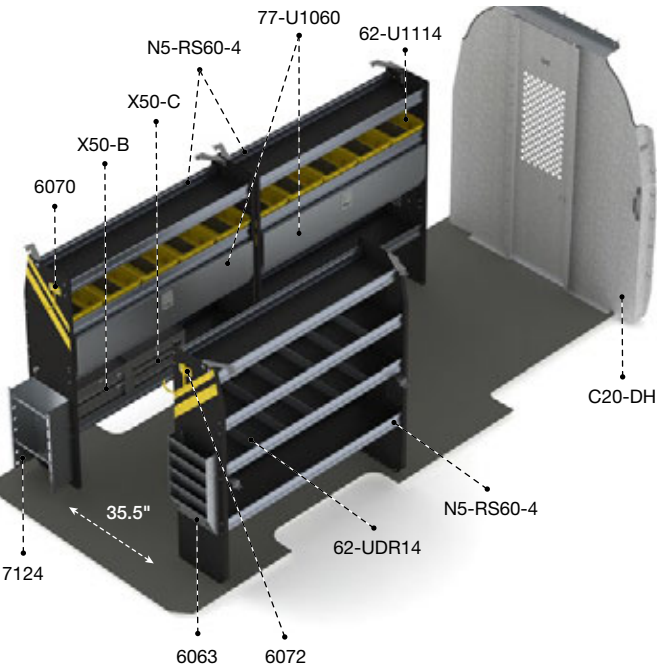
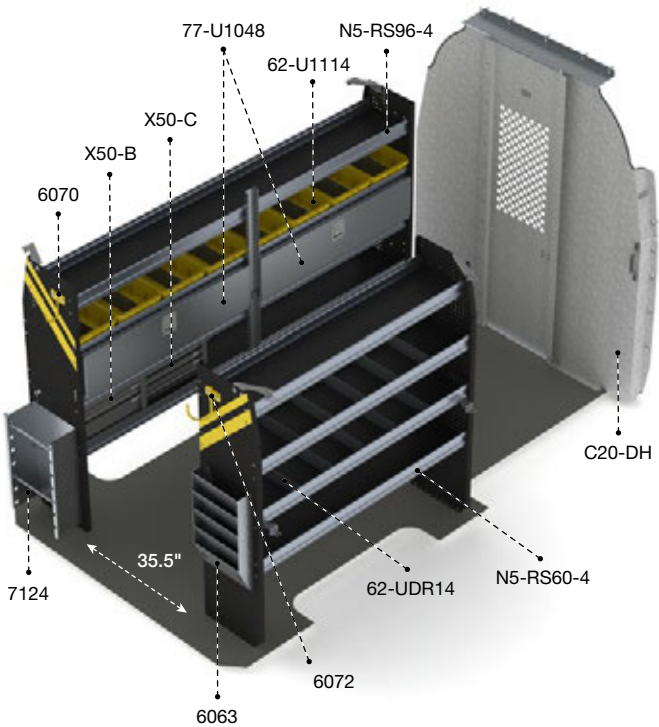


Qty	Part #	Description
1	6063	Paper holder, extra deep, 5 slots
1	6070	6" Hook, 3" opening, painted
1	6072	8" Swivel hook, 4" opening, painted
8	62-U1114	14" Deep plastic bin
2	62-UDR14	Set of 5 dividers for a 14" shelf
1	7124	Reel holder with two 5/8" diameter rods
2	77-U1048	Adjustable shelving door unit - 45" W - for 48" & 96" shelves
1	C20-DH	Straight partition with perforated window, no access
1	N5-RS60-4	Steel shelving unit for high roof van, 14" D x 60" W x 62" H
1	N5-RS96-4	Steel shelving unit for high roof van, 14" D x 96" W x 62" H
1	X50-B	Compact 2-drawer unit
1	X50-C	Compact 3-drawer unit



DLS-11 Package\* is identical to DHS-11 Package with the exception of the partition which changes to C20-DL.

\*For Low Roof 144" wheelbase



DHL-11  
170" OR 170" EXTENDED WHEELBASE

> High Roof

Qty	Part #	Description
1	6063	Paper holder, extra deep, 5 slots
1	6070	6" Hook, 3" opening, painted
1	6072	8" Swivel hook, 4" opening, painted
10	62-U1114	14" Deep plastic bin
2	62-UDR14	Set of 5 dividers for a 14" shelf
1	7124	Reel holder with two 5/8" diameter rods
2	77-U1060	Adjustable shelving door unit - 57" W - for 60" shelves
1	C20-DH	Straight partition with perforated window, no access
3	N5-RS60-4	Steel shelving unit for high roof van, 14" D x 60" W x 62" H
1	X50-B	Compact 2-drawer unit
1	X50-C	Compact 3-drawer unit





## DHS-11



### 62-U1110, 62-U1112, 62-U1114

Plastic bins with a center divider  
Available in 10", 12" or 14" depths



### 62-U1212

2 Cross dividers for bin  
Fits all size bins



### 77-U1042

Adjustable shelving door  
unit 39" wide for a 84" shelf

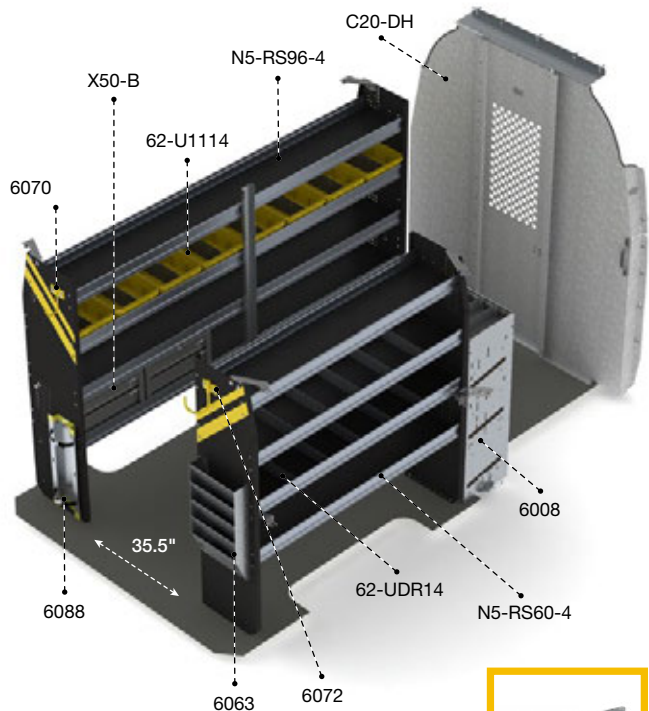
**FOR MORE ACCESSORIES, SEE PAGE 20.**

**DHS-12****144" WHEELBASE**

&gt; High Roof



Qty	Part #	Description
1	6008	3 Tier refrigerant rack for large bottles
1	6063	Paper holder, extra deep, 5 slots
1	6070	6" Hook, 3" opening, painted
1	6072	8" Swivel hook, 4" opening, painted
1	6088	Large aluminum bottle holder, with two black nylon straps
8	62-U1114	14" Deep plastic bin
2	62-UDR14	Set of 5 dividers for a 14" shelf
1	77-U1060	Adjustable shelving door unit - 57" W - for 60" shelves
1	C20-DH	Straight partition with perforated window, no access
1	N5-RS60-4	Steel shelving unit for high roof van, 14" D x 60" W x 62" H
1	N5-RS96-4	Steel shelving unit for high roof van, 14" D x 96" W x 62" H
2	X50-B	Compact 2-drawer unit

**C20-DL**

**DLS-12 Package\*** is identical to DHS-12 Package with the exception of the partition which changes to C20-DL.

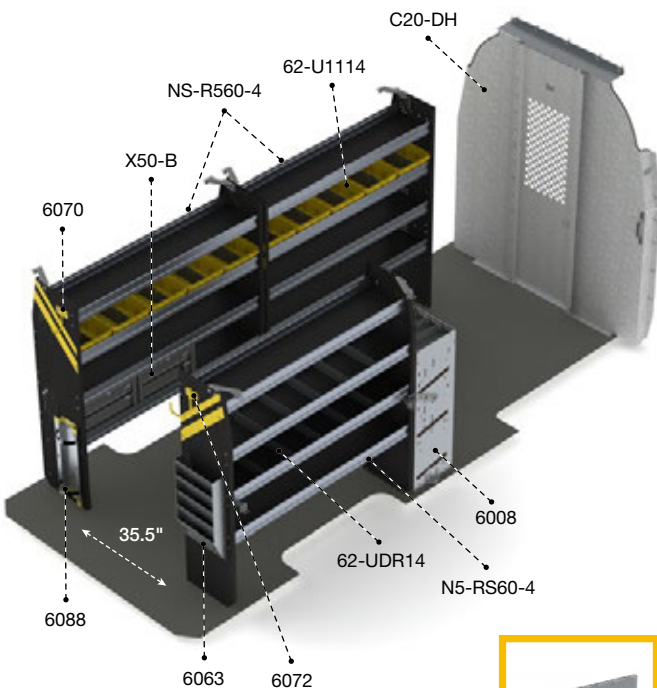
\*For Low Roof 144" wheelbase



77-U1060

**DHL-12****170" OR 170" EXTENDED WHEELBASE**

&gt; High Roof



77-U1060

Qty	Part #	Description
1	6008	3 Tier refrigerant rack for large bottles
1	6063	Paper holder, extra deep, 5 slots
1	6070	6" Hook, 3" opening, painted
1	6072	8" Swivel hook, 4" opening, painted
1	6088	Large aluminum bottle holder, with two black nylon straps
10	62-U1114	14" Deep plastic bin
2	62-UDR14	Set of 5 dividers for a 14" shelf
1	77-U1060	Adjustable shelving door unit - 57" W - for 60" shelves
1	C20-DH	Straight partition with perforated window, no access
3	N5-RS60-4	Steel shelving unit for high roof van, 14" D x 60" W x 62" H
2	X50-B	Compact 2-drawer unit





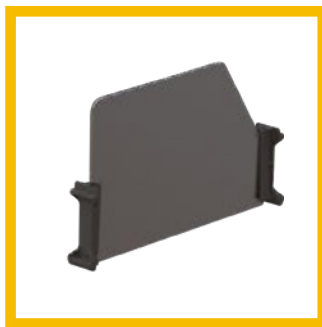


## DHS-12



### 62-UDR14

Set of 5 dividers  
for a 14" shelf



### 62-UDH14

Set of 5 high dividers  
for a 14" shelf



### 6088

Large aluminum bottle holder,  
with two black nylon straps



### 6008

3 Tier refrigerant  
rack for large bottles

**FOR MORE ACCESSORIES, SEE PAGE 20.**

DHS-19  
144" WHEELBASE  
> High Roof

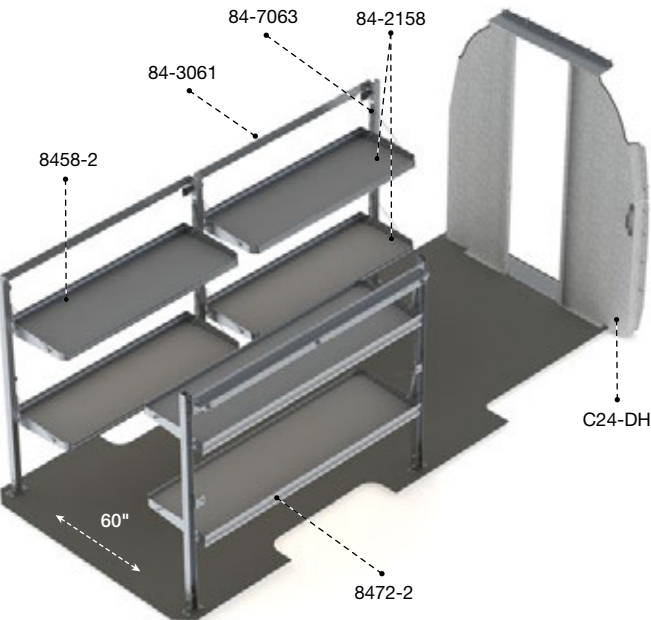
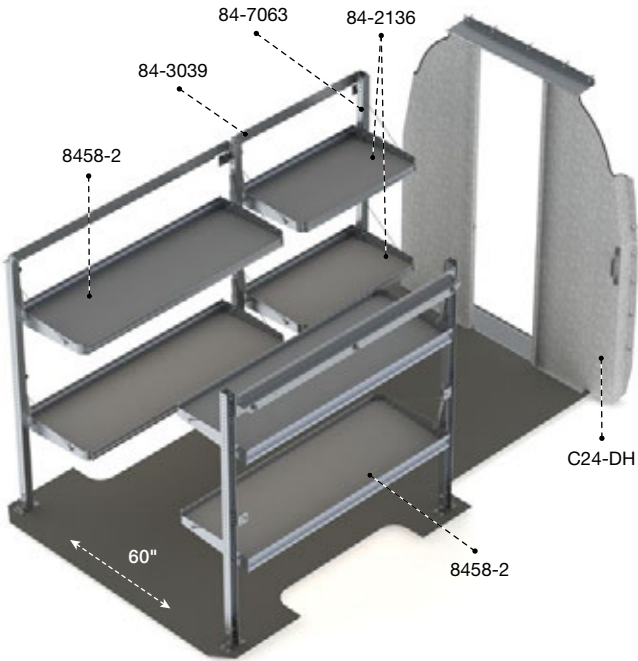


Qty	Part #	Description
2	84-2136	Fold-away shelf tray with gas shocks and hardware 21" D x 36" W
1	84-3039	Mounting bar - fold-away shelving unit: 36" W
2	8458-2	Fold-away shelving unit, 2 levels, 21"D x 58" W x 63.5" H
1	84-7063	Post assembly for fold-away shelving, 63.5" H
1	C24-DH	Straight walk through steel partition



DLS-19 Package\* is identical to DHS-19 Package with the exception of the partition which changes to C24-DL.

\*For Low Roof 144" wheelbase



DHL-19  
170" OR 170" EXTENDED WHEELBASE  
> High Roof

Qty	Part #	Description
2	84-2158	Fold-away shelf tray with gas shocks and hardware 21" D x 58" W
1	84-3061	Mounting bar assembly, fold-away shelving 58"
1	8458-2	Fold-away shelving unit, 2 levels, 21"D x 58" W x 63.5" H
1	84-7063	Post assembly for fold-away shelving, 63.5" H
1	8472-2	Fold-away shelving unit, 2 levels, 21"D x 72" W x 63.5" H
1	C24-DH	Straight walk through steel partition



**DHS-19**

## YOUR PERSONAL **FLEX SPACE**

**Our fold-away shelves are designed to give you the ultimate in cargo flexibility**

- Flexible
- Easy to use
- Tough



## THE BENEFITS OF **ALUMINUM**

**Weight saving equipment  
reduces total cost of ownership**



Optimize fuel economy by  
decreasing overall van mass



Reduce vehicle maintenance and  
repairs caused by weight overload



Increase payload without sacrificing  
quality – it's a benefit offered  
only by aluminum

**Did you know that for every 100 lbs reduction,  
you increase fuel economy by 1%?**

[www.fueleconomy.gov](http://www.fueleconomy.gov)

**Ranger Design is the leader for  
aluminum upfits in North America**



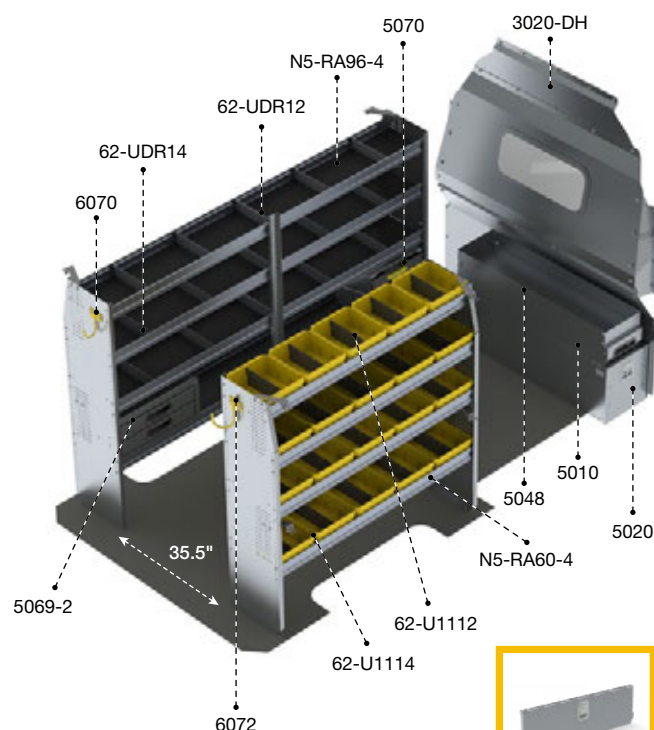


**DHS-27****144" WHEELBASE**

&gt; High Roof



Qty	Part #	Description
1	<b>3020-DH</b>	Countoured safety partition with tempered glass window
1	<b>5010</b>	Partslider drawer
1	<b>5020</b>	Tool drawer 48" D × 14" W × 16" H
1	<b>5048</b>	Top edge
1	<b>5069-2</b>	2 Drawer cabinet
2	<b>5070</b>	Partskeeper carry case with holder
1	<b>6070</b>	6" Hook, 3" opening, painted
1	<b>6072</b>	8" Swivel hook, 4" opening, painted
5	<b>62-U1112</b>	12" Deep plastic bin
15	<b>62-U1114</b>	14" Deep plastic bin
1	<b>62-UDR12</b>	Set of 5 dividers for a 12" shelf
2	<b>62-UDR14</b>	Set of 5 dividers for a 14" shelf
1	<b>77-U1060</b>	Adjustable shelving door unit - 57" W - for 60" shelves
1	<b>N5-RA60-4</b>	Aluminum shelving unit high roof van, 60", 14"D × 60" W × 62"H
1	<b>N5-RA96-4</b>	Aluminum shelving unit high roof van, 96", 14"D × 96" W × 62"H

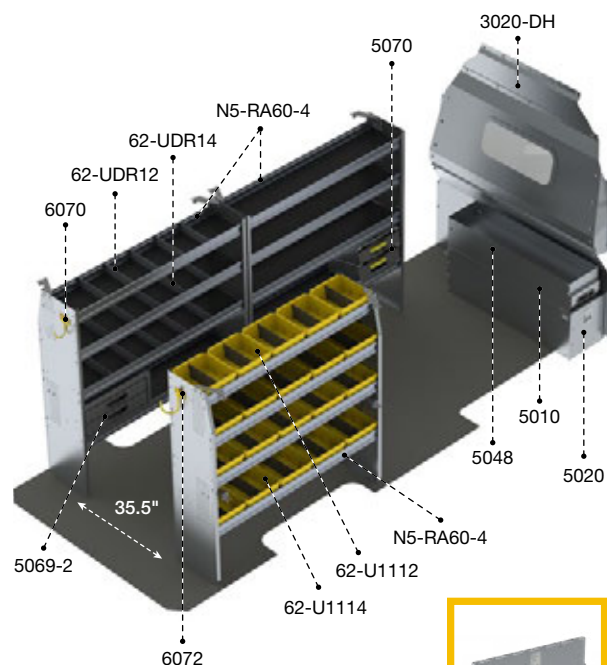


**DLS-27 Package\*** is identical to DHS-27 Package with the exception of the partition which changes to 3020-DL.

\*For Low Roof 144" wheelbase

**DHL-27****170" OR 170" EXTENDED WHEELBASE**

&gt; High Roof



Qty	Part #	Description
1	<b>3020-DH</b>	Countoured safety partition with tempered glass window
1	<b>5010</b>	Partslider 48" D
1	<b>5020</b>	Tool drawer 48" D × 14" W × 16" H
1	<b>5048</b>	Top edge
1	<b>5069-2</b>	2 Drawer cabinet
2	<b>5070</b>	Partskeeper carry case with holder
1	<b>6070</b>	6" Hook, 3" opening, painted
1	<b>6072</b>	8" Swivel hook, 4" opening, painted
5	<b>62-U1112</b>	12" Deep plastic bin
15	<b>62-U1114</b>	14" Deep plastic bin
2	<b>62-UDR12</b>	Set of 5 dividers for a 12" shelf
2	<b>62-UDR14</b>	Set of 5 dividers for a 14" shelf
1	<b>77-U1060</b>	Adjustable shelving door unit - 57" W - for 60" shelves
3	<b>N5-RA60-4</b>	Aluminum shelving unit high roof van, 60", 14"D × 60" W × 62"H





# DHS-27

## AN ERGONOMIC SOLUTION TO STORAGE

### Ranger Design tool drawers offer:

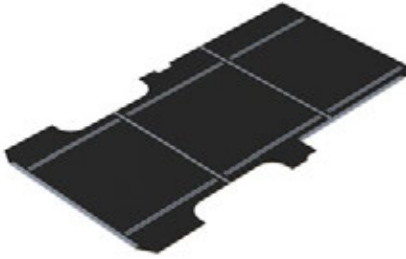
- Accessibility
- Organization
- Security
- Lockable

**5020** Tool drawer mounted with a **5010** Partslider drawer and **5048** Top edge.



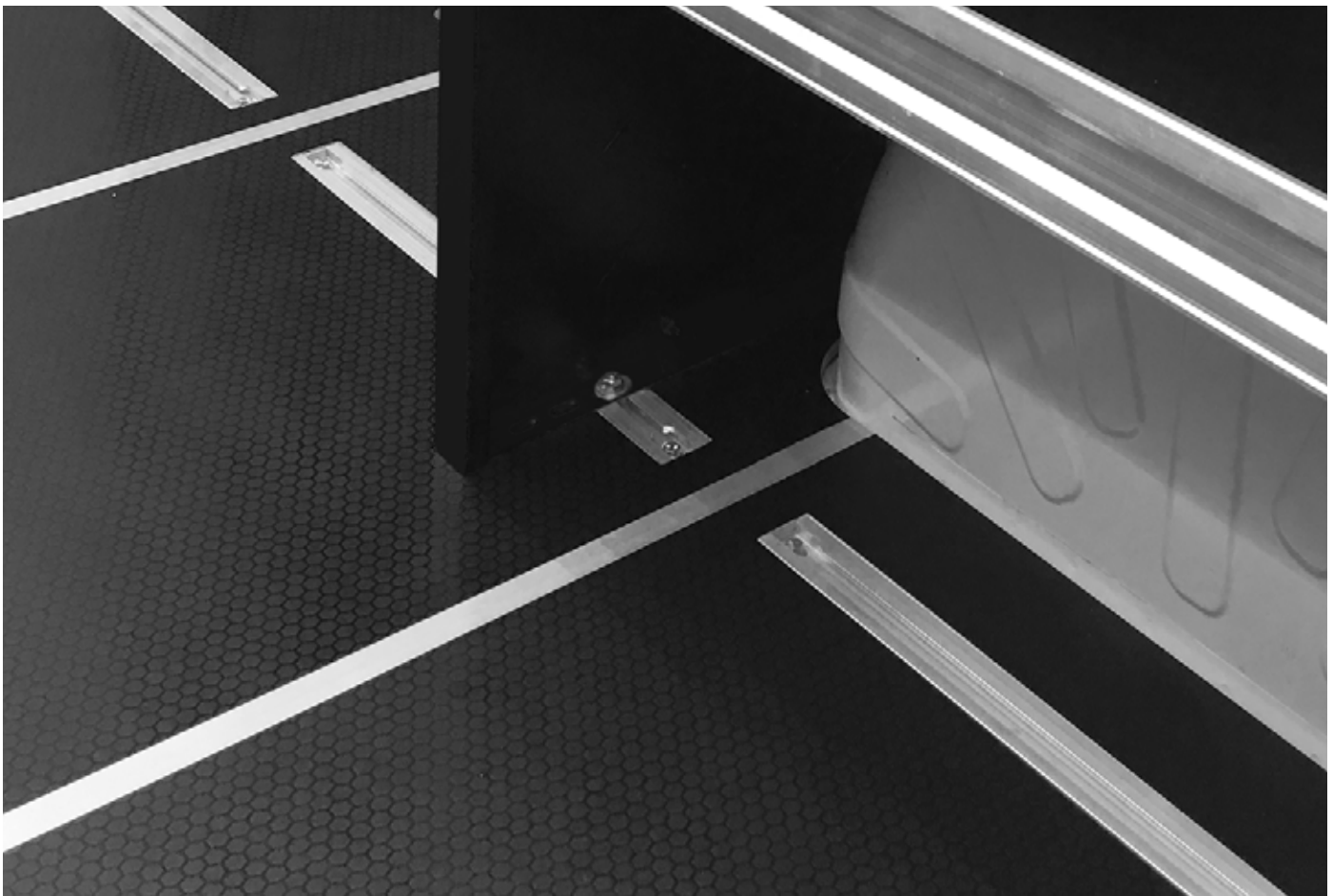
# IT'S MORE THAN A FLOOR!

With incorporated mounting tracks for easy install for most Ranger Design products.



## 6540-DR

Mercedes Sprinter floor  
for 144" wheelbase



**Impact and puncture resistant floors**  
Preserve the cargo van interior

# ACCESSORIES



**5070**

Partskeeper carry case with holder, universal



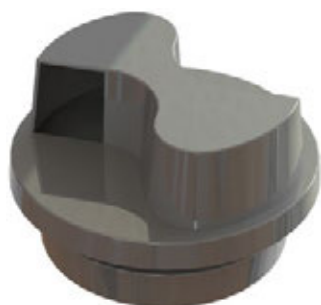
**6010**

Two level adjustable bottle holder



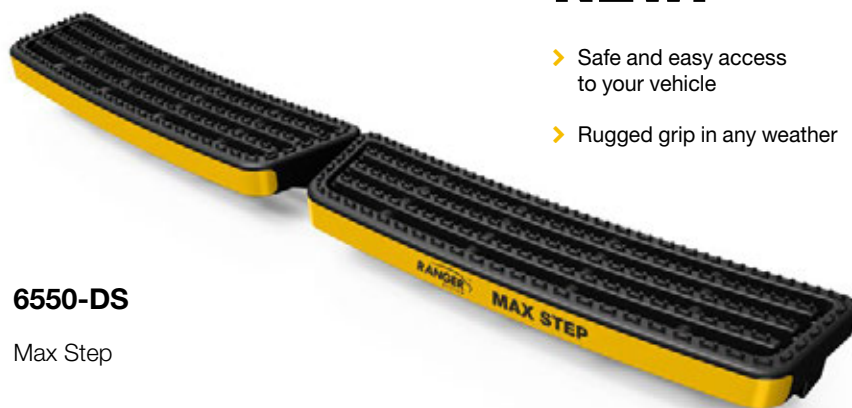
**6041**

Locking cabinet



**6050**

Flettner vent, rotary design



**NEW!**

- Safe and easy access to your vehicle
- Rugged grip in any weather

**6550-DS**

Max Step



**6057**

Can holder



**6063**

Paper holder, extra deep, 5 slots



**6068**

Hard hat holder, painted wire





**6073**

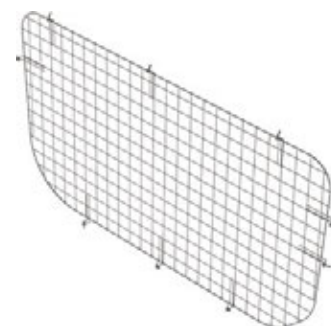
Large aluminum movable hook, 6.5" opening

**NEW!**



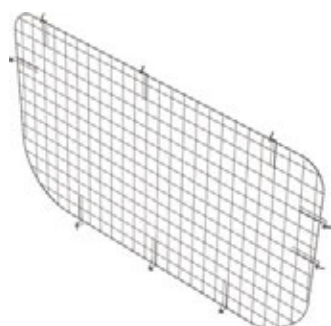
**6092-42**

Universal LED light kit for trucks and vans (12V DC / 1200 Lm / 10W)



**61117**

Window grill, passenger side sliding door



**61117**

Window grill, passenger side sliding door



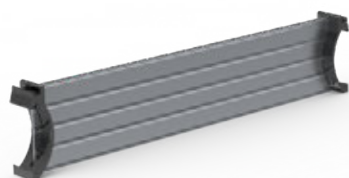
**62-U1110, 62-U1112, 62-U1114**

10", 12" or 14" Deep plastic bin  
All bins come with a center divider



**62-U1212**

2 Cross dividers for plastic bins  
Fits all size bins



**62-UDR10, 62-UDR12, 62-UDR14**

Set of 5 dividers for a 10", 12" or 14" shelf



**6257, 6257-19 (SPRINTER 2019)**

Seat covers



**77-U1060**


Adjustable shelving door unit  
- 57" W - for 60" shelves

# LADDER RACKS



Cargo rack


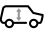

Aluminum

			
1505-DH	144", 170", 170" Ext	High	



Combination ladder rack




Aluminum

			
1525-DH	144", 170", 170" Ext	High	32 ft



Double clamp ladder rack




Aluminum

			
1530-DH	144", 170", 170" Ext	High	32 ft



Max Rack 2.0, Single side ladder rack



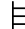
Aluminum

			
1870-DH	144", 170", 170" Ext	High	32 ft



Max Rack 2.0, Double side ladder rack

Aluminum

			
1880-DH	144", 170", 170" Ext	High	32 ft

## RANGER DESIGN MAX RACK 2.0



# Turn-Key Fleet Services



## Ship Through or Local Installation Across North America for all Types of Cargo Vans

We are pleased to offer efficient, personalized service and to answer all questions regarding:

### 1. Analysis

- › Cargo Needs Analysis
- › Custom 3D CAD Layouts
- › Hands-on Equipment Demo

### 2. Testing

- › Test Fitting
- › Pilot Build and Review
- › Optimize Package Based on Technician Feedback

### 3. Delivery

- › Delivery, Production and Installation Planning and Scheduling
- › Vehicle Status Tracking

### 4. Service

- › Dedicated Fleet Account Management Team
- › 350 Ranger Design Distributor Service Support Network
- › Live Customer Service



**THE PERFECT FIT**  
FOR YOUR  
**TOUGHEST JOBS**

When you want the perfect upfit solution for your work vehicle, turn to Ranger Design. Tested for toughness, Ranger Design's shelving and upfits will take whatever abuse you can dish out. Their unsurpassed craftsmanship, combined with ideal fit and finish, provide a quiet ride with no rattles.



**CUSTOMER SERVICE**

[cs@rangerdesign.com](mailto:cs@rangerdesign.com)

1-800-565-5321

[rangerdesign.com](http://rangerdesign.com)

