

MARBLE SYSTEMS™

Since 1982, Marble Systems Inc. has been committed to creating exquisite collections of natural stone. Quarried and processed to exacting specifications using the latest manufacturing technology, our product lines are produced in a wide variety of specialized surface finishes ranging from our smooth Patika and polished lines to our rustic tumbled, chiseled, and antiqued designs.

With distribution and design centers in Washington, D.C., New York, Florida and Los Angeles, Marble Systems is uniquely positioned to provide an extensive supply of the industry's highest quality natural stone products.

Why? Marble Systems is the exclusive distributor of The Tureks Stone Collection, bringing with it the strength of expert quarry and manufacturing operations and the highest levels of quality control, while insuring for the quality, consistency and supply of trade professionals and dealers. We control our stock from the quarry, to the factory, from our warehouse, to your door.

Today, Marble Systems has emerged as the leading choice among top architects, interior designers and discriminating homeowners seeking the finest in natural stone products. Several of our most prestigious projects include: Merrick Plaza, Miami, Trump Plaza, New York, and the Bellagio Casino, Las Vegas.

If you're looking for the finest selection of natural stone, select Marble Systems. The clear leading source for naturally beautiful surfaces.

HOW IT IS MADE

AQUA FORTE TEXTILES

Textures are applied to natural stone tile with a special transparent paint. Aqua forte technique provides a textured beveled look on the tile. Whole surface of the tile is painted with a durable paint and as a finishing touch tile is finely sanded for a rustic look.

AQUA FORTE PRECIOUS METALS

Textures are applied to natural stone tile with a special transparent paint. Aqua forte technique provides a textured beveled look on the tile. As a finishing touch tile is covered with golden sheets.

AQUA FORTE INDIGO

Natural stone tile is brushed and sanded than painted with a special paint and technique. Surface is brushed and sanded for a rustic look after it is dried.

AQUA FORTE CLAWED

Natural stone tile surface is scratched with a special machine and technique than painted. Surface is sanded for a rustic look after it is dried.

AQUA FORTE TOURILLON

A special technique is applied to natural stone with a special machinery and technique for the grainy look and finish. Than dried surface is sanded for a rustic look.

Aqua forte technique and paints that are used during the process are completely safe and no harm to human health, pet health and environment.

AQUA FORTE

TEXTILES





OTTOMAN TEXTILE 1 INDIGO

AQF10001 - 4"x4"x3/8"
 AQF10002 - 4"x12"x3/8"
 AQF10003 - 12"x12"x3/8"
 AQF10004 - 12"x24"x1/2"



OTTOMAN TEXTILE 1 OCRA

AQF10005 - 4"x4"x3/8"
 AQF10006 - 4"x12"x3/8"
 AQF10007 - 12"x12"x3/8"
 AQF10008 - 12"x24"x1/2"

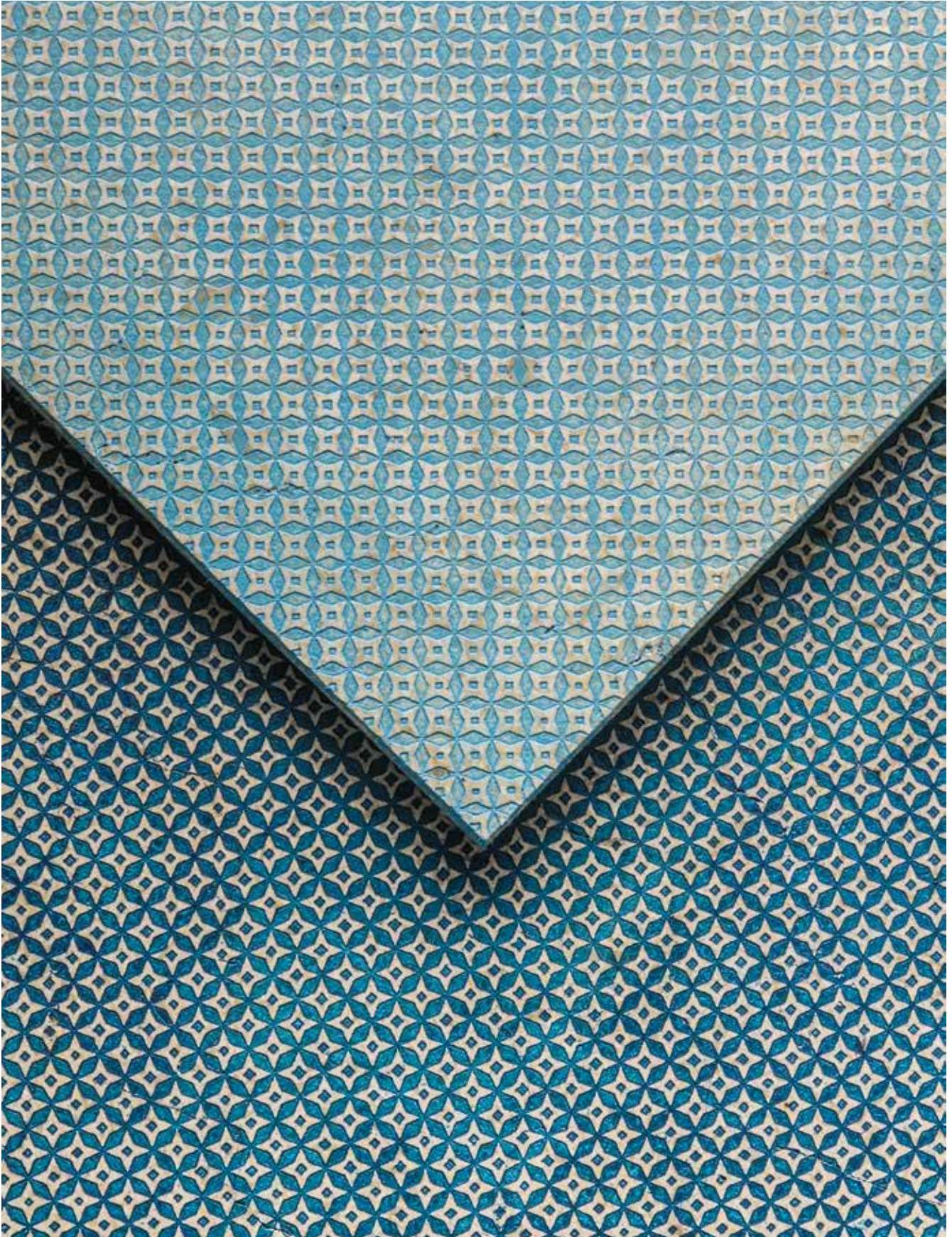


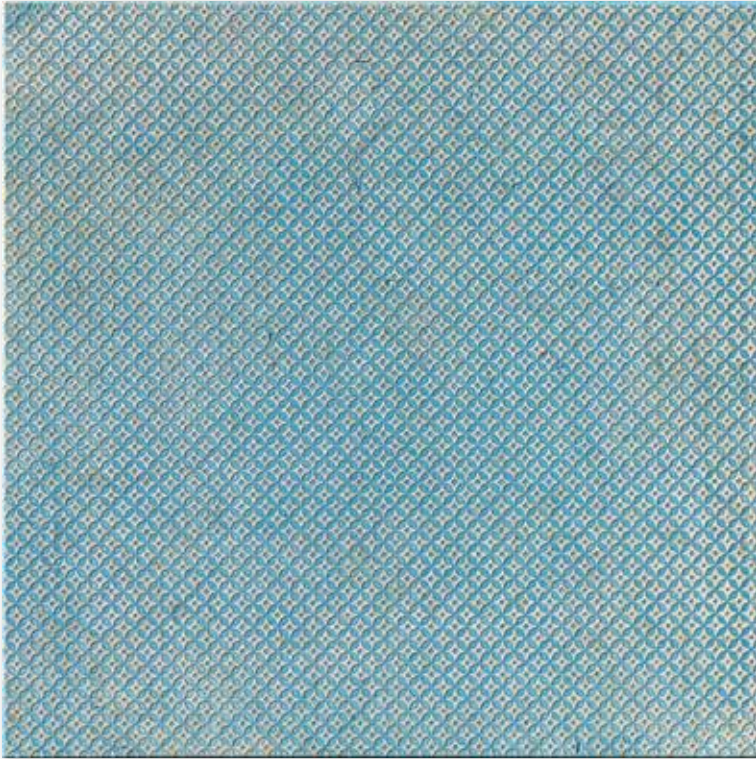
OTTOMAN TEXTILE 1 ROSE

AQF10009 - 4"x4"x3/8"
 AQF10010 - 4"x12"x3/8"
 AQF10011 - 12"x12"x3/8"
 AQF10012 - 12"x24"x1/2"

AQUA FORTE

TEXTILES





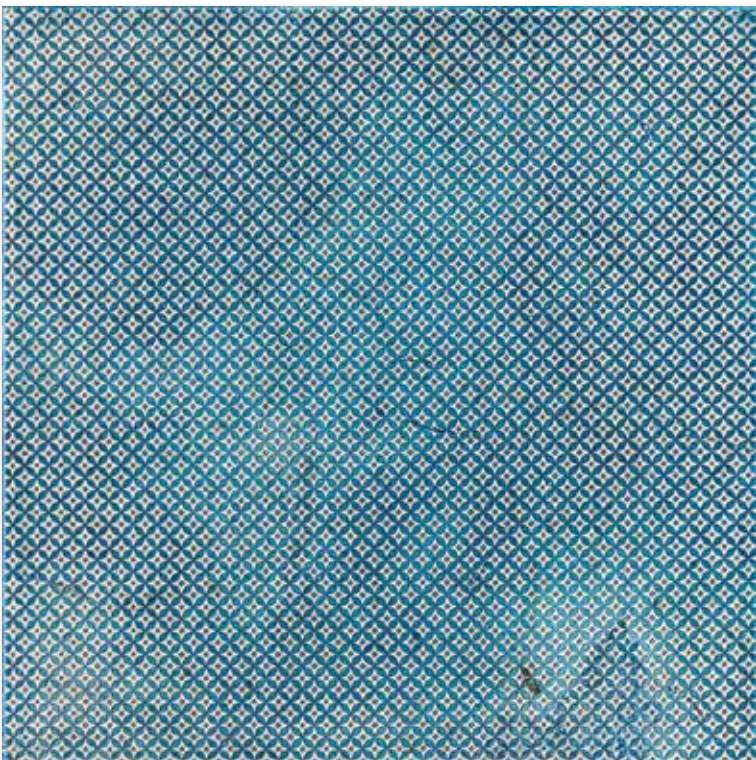
OTTOMAN TEXTILE 2 INDIGO LIGHT

AQF10013 - 4"x4"x3/8"

AQF10014 - 4"x12"x3/8"

AQF10015 - 12"x12"x3/8"

AQF10016 - 12"x24"x1/2"



OTTOMAN TEXTILE 2 INDIGO

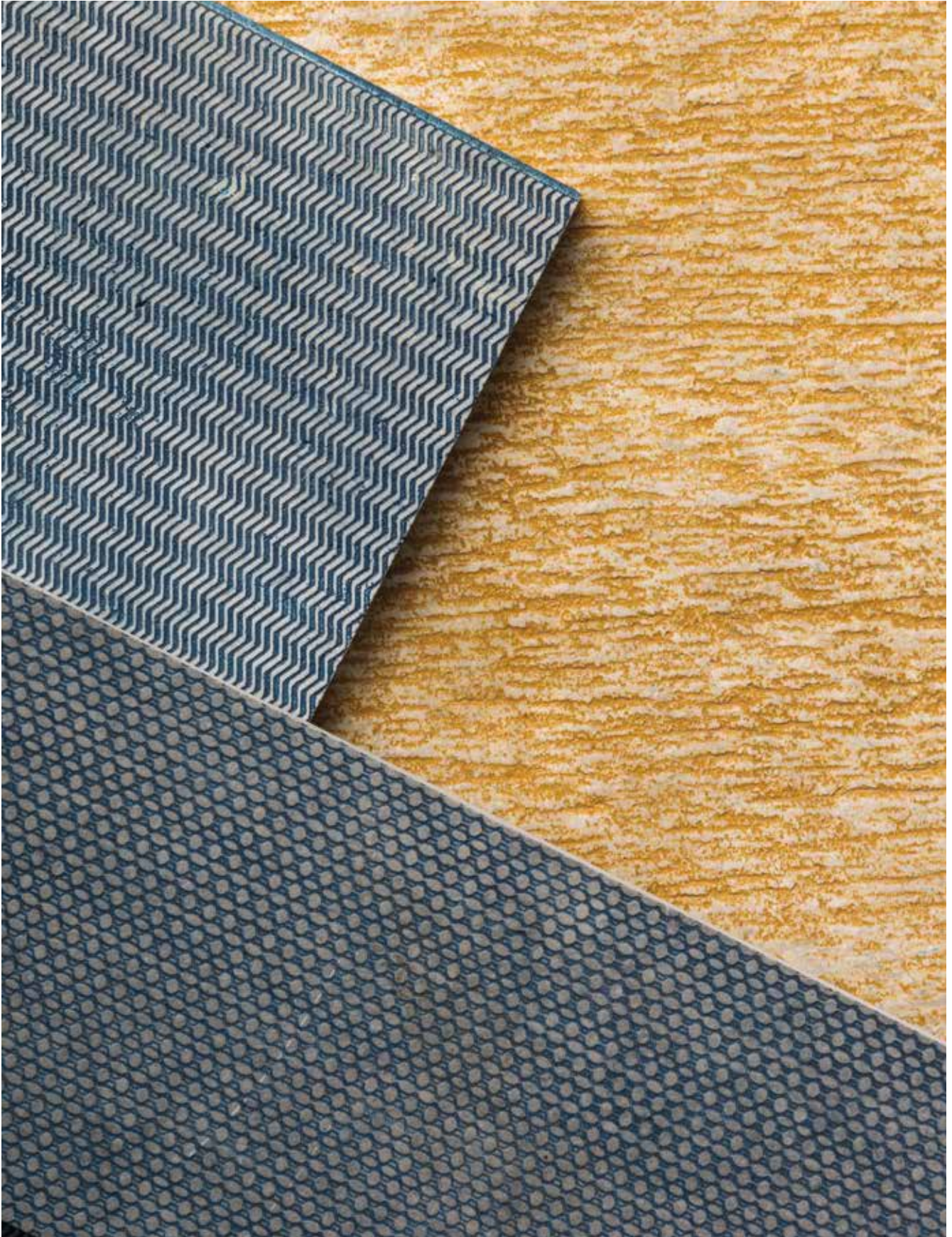
AQF10017 - 4"x4"x3/8"

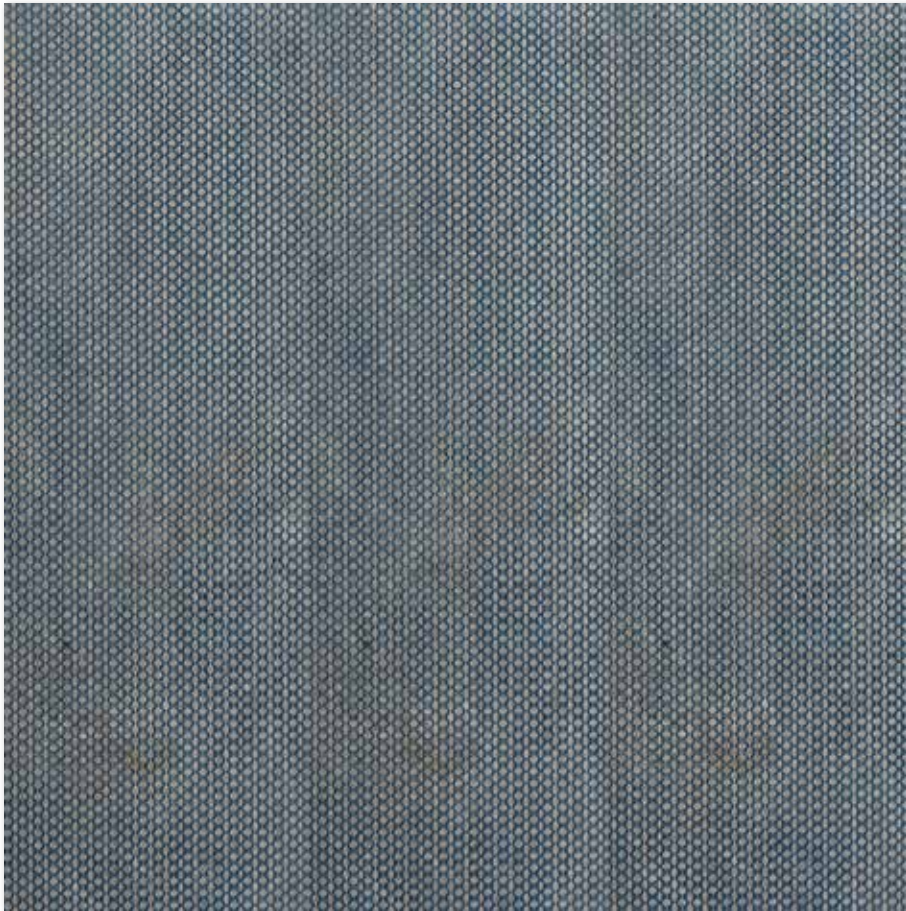
AQF10018 - 4"x12"x3/8"

AQF10019 - 12"x12"x3/8"

AQF10020 - 12"x24"x1/2"

AQUA FORTE
TEXTILES





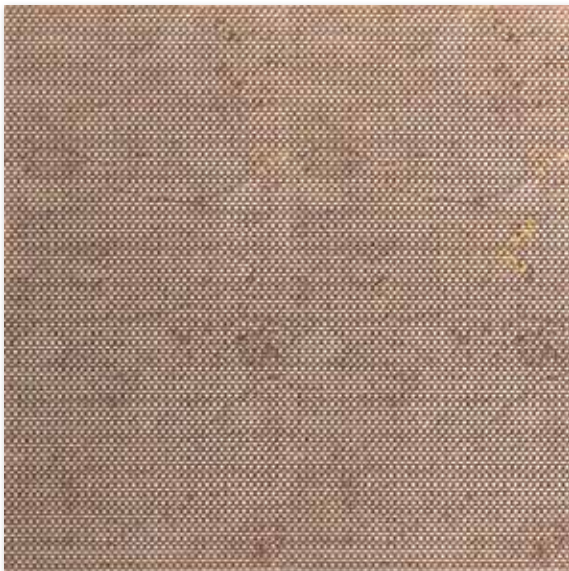
OTTOMAN TEXTILE 3 INDIGO

AQF10021 - 4"x4"x3/8"

AQF10022 - 4"x12"x3/8"

AQF10023 - 12"x12"x3/8"

AQF10024 - 12"x24"x1/2"



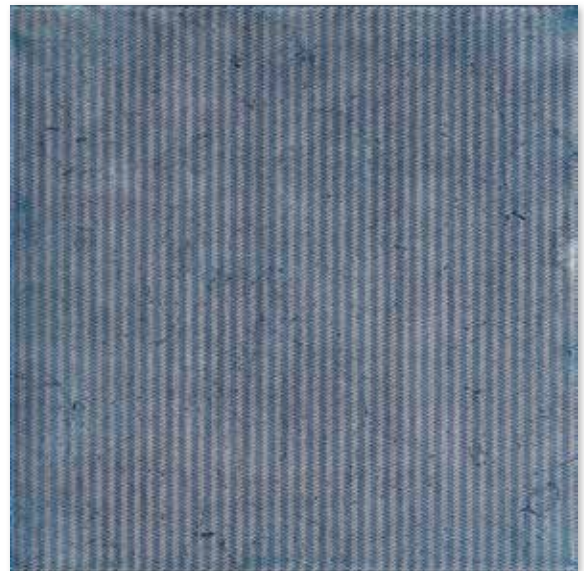
OTTOMAN TEXTILE 3 CHESNUT

AQF10025 - 4"x4"x3/8"

AQF10026 - 4"x12"x3/8"

AQF10027 - 12"x12"x3/8"

AQF10028 - 12"x24"x1/2"



OTTOMAN TEXTILE 4 INDIGO

AQF10029 - 4"x4"x3/8"

AQF10030 - 4"x12"x3/8"

AQF10031 - 12"x12"x3/8"

AQF10032 - 12"x24"x1/2"

AQUA FORTE

PRECIOUS METALS





OTTOMAN TEXTILE 1 GOLD

AQF10038 - 4"x4"x3/8"
 AQF10039 - 4"x12"x3/8"
 AQF10040 - 12"x12"x3/8"
 AQF10041 - 12"x24"x1/2"



OTTOMAN TEXTILE 2 GOLD

AQF10042 - 4"x4"x3/8"
 AQF10043 - 4"x12"x3/8"
 AQF10044 - 12"x12"x3/8"
 AQF10045 - 12"x24"x1/2"



OTTOMAN TEXTILE 3 GOLD

AQF10046 - 4"x4"x3/8"
 AQF10047 - 4"x12"x3/8"
 AQF10048 - 12"x12"x3/8"
 AQF10049 - 12"x24"x1/2"

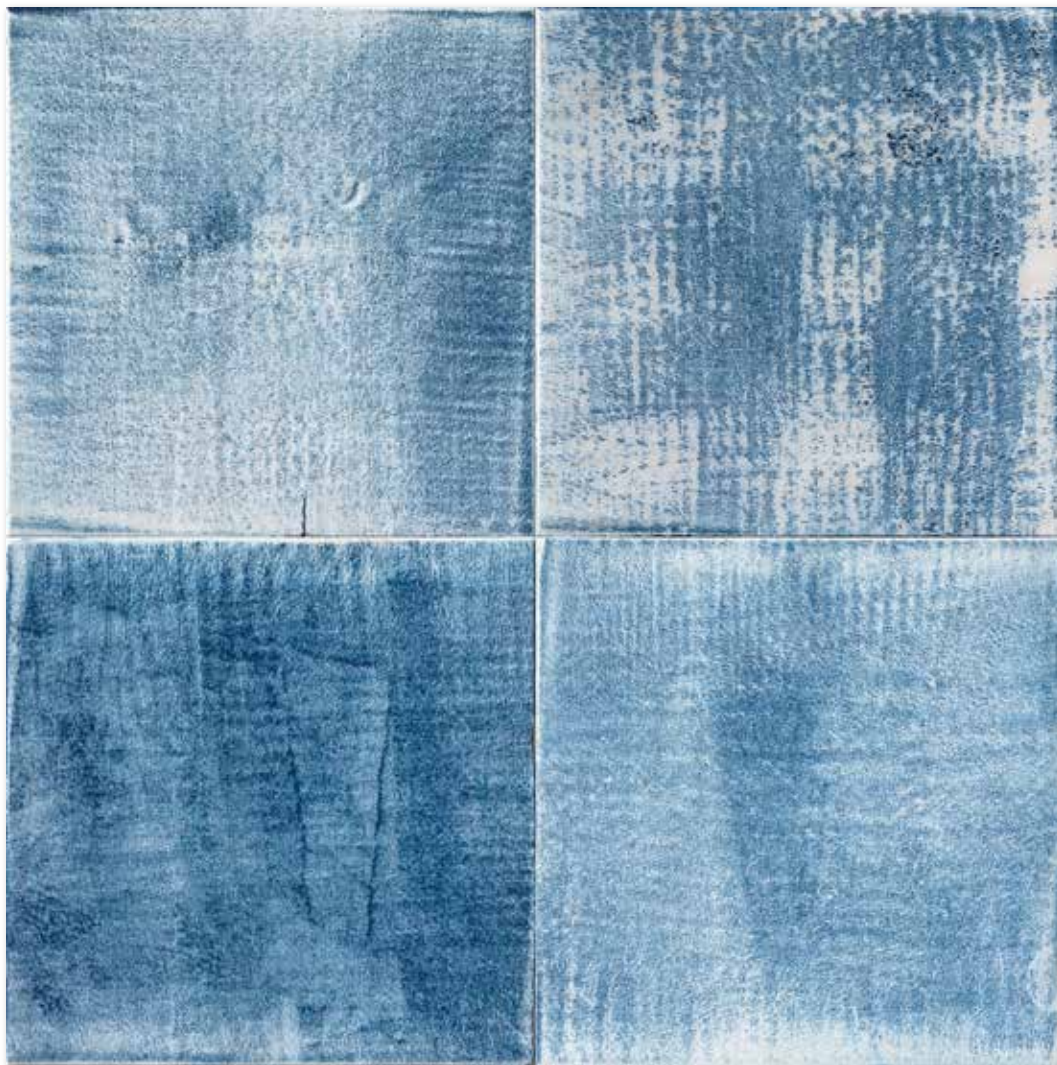


OTTOMAN TEXTILE 4 GOLD

AQF10050 - 4"x4"x3/8"
 AQF10051 - 4"x12"x3/8"
 AQF10052 - 12"x12"x3/8"
 AQF10053 - 12"x24"x1/2"

AQUA FORTE
INDIGO





INDIGO

AQF10054 - 4"x4"x3/8"

AQF10055 - 4"x12"x3/8"

AQF10056 - 12"x12"x3/8"

AQF10057 - 12"x24"x1/2"

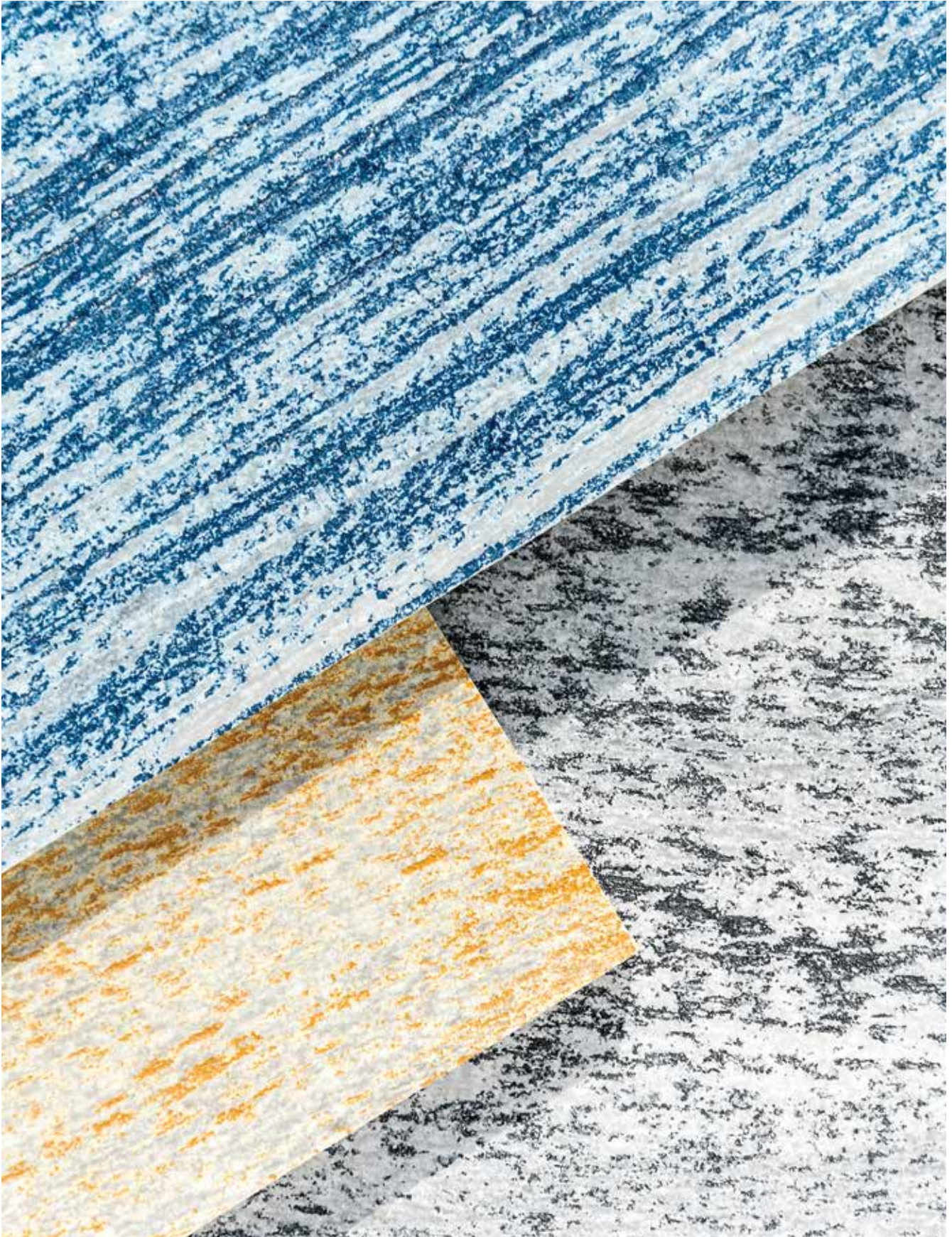


INDIGO MOSAIC

AQF10058 - 12"x12"x3/8" Sheet

AQUA FORTE

CLAWED





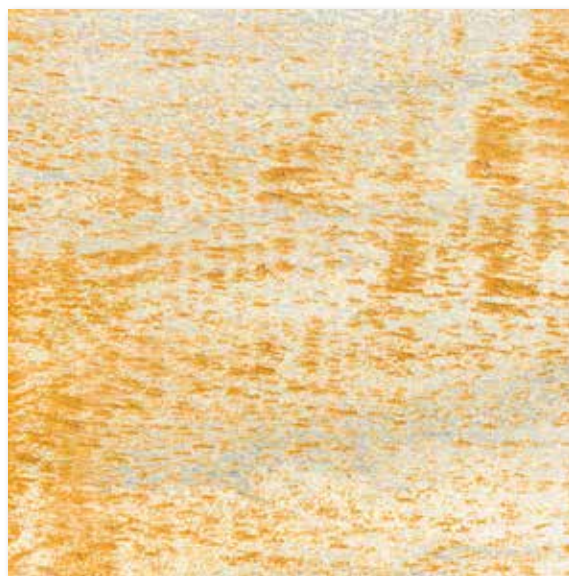
INDIGO CLAWED

AQF10059 - 4"x4"x3/8"
 AQF10060 - 4"x12"x3/8"
 AQF10061 - 12"x12"x3/8"
 AQF10062 - 12"x24"x1/2"



COAL CLAWED

AQF10063 - 4"x4"x3/8"
 AQF10064 - 4"x12"x3/8"
 AQF10065 - 12"x12"x3/8"
 AQF10066 - 12"x24"x1/2"

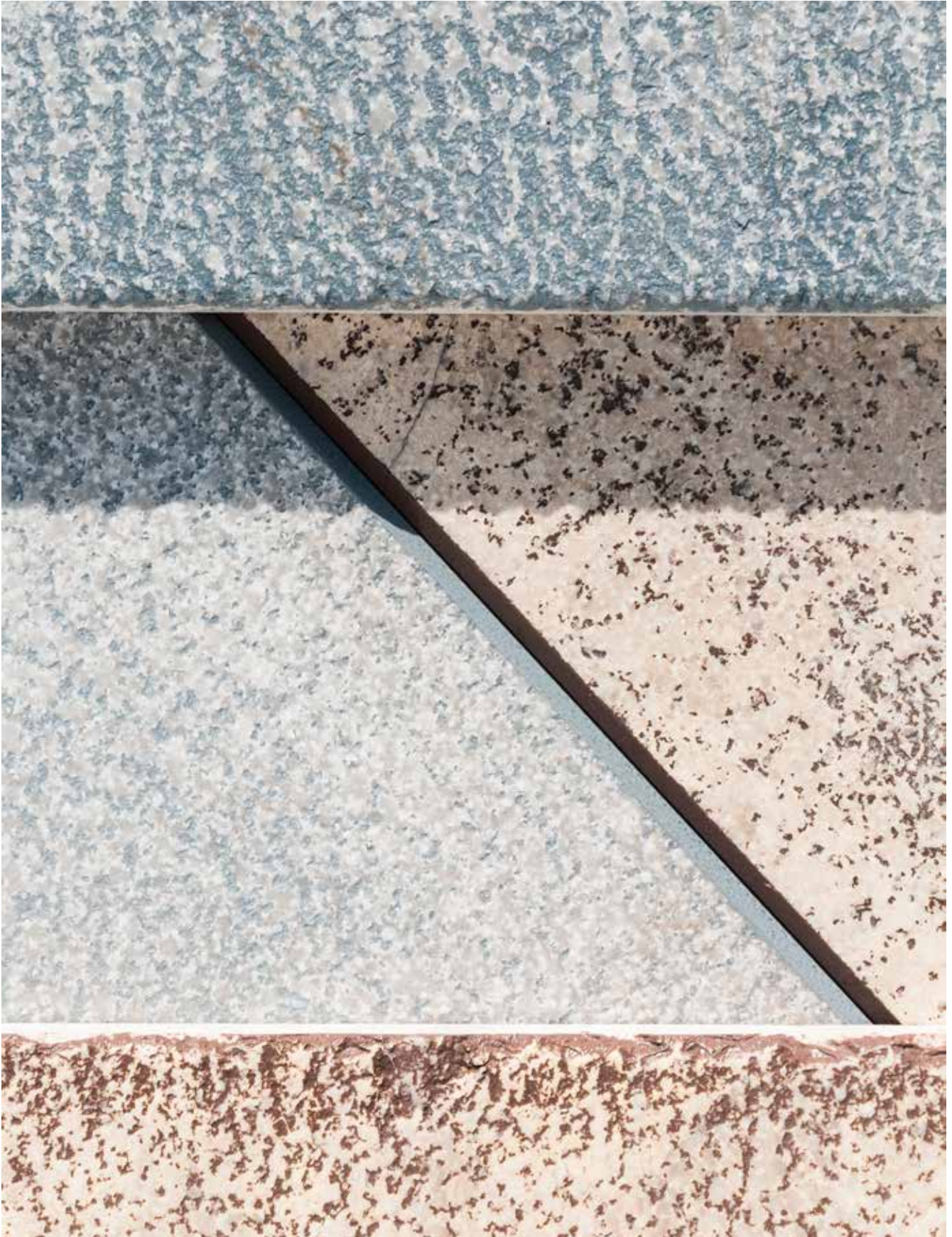


OCRA CLAWED

AQF10067 - 4"x4"x3/8"
 AQF10068 - 4"x12"x3/8"
 AQF10069 - 12"x12"x3/8"
 AQF10070 - 12"x24"x1/2"

AQUA FORTE

TOURILLON





IRIS ENGLISH EDGE *
AQF10071 - 12"x24"x1/2"
*(1 long & 1 short edge bevelled)



CHESTNUT ENGLISH EDGE *
AQF10072 - 12"x24"x1/2"
*(1 long & 1 short edge bevelled)



IRIS CRAFT EDGE
AQF10073 - 12"x24"x1/2"



CHESTNUT CRAFT EDGE
AQF10074 - 12"x24"x1/2"

INFORMATION ABOUT AQUA FORTE COLLECTION

Aqua Forte is a unique artisan technique where organic or intentional patterns are etched into natural stone using multiple etching and engraving methods. After the etching process the stones are hand colorized, gilded or glazed with natural and organic dyes and materials to deliver a uniquely beautiful result. Our Aqua Forte Collection is recommended for vertical interior installation preferably not under direct sun light.

Installation of Aqua Forte:

Should be adhered using regular installation products used for marbles.

Can be cut or drilled with marble wet cutting or wet drilling tools using clean water.

We recommend installing Aqua Forte with tight joints and no grouting for the best aesthetic look. If grout joints are preferred, the grout should be a non sanded cementitious grout normally used for stone.

*Very important: do not use epoxy grout.

If installation with grout joints is selected, before grouting, all the products will need to be protected: after the installation and when dry, we recommend applying a grout release product like FILA PRW200*.

After the installation all the surfaces should be cleaned with a pH neutral detergent like the FILA CLEANER.

After the installation (with or without grout) all the surfaces should be sealed and protected with FILA MP90.

Please note that all the recommended products mentioned are water based and ecologically friendly.

For normal maintenance use please use pH neutral detergents intended for marble.

*Very important: do not use abrasive pads of any kind, acids or aggressive soaps and anti-calcareous products on Aqua Forte.

